

Tuesday, 20 February, 2024

19:35



Bulletin 2: Scrutineering

Scrutineering location and info

Scrutineering for Cars (including SxS) and Bikes and Quads will again be located at Watson's Hot Rod Garage located at 23 Chesterfield Hwy, Cheraw, SC.

There will be no logbooks issued during scrutineering hours. If your car requires a logbook, contact your closest scrutineer now to arrange to have it done before Sandblast.

Vehicles presented for scrutineering must already have all required elements in place. No "stickering", repairs, or additions required to pass scrutineering will be allowed while in scrutineering.

Vehicles to be inspected, and crew, will remain outdoors during scrutineering, weather permitting.

We ask that all competitors arriving at the vicinity of Watson's Garage with competition vehicles on/in trailers/trucks park the truck/trailer in the lot marked in GREEN across Chesterfield Hwy from Watson's and drive the competition vehicle to the entrance, or queue line, outside scrutineering on Robey St.

Access to scrutineering areas (outlined in red and yellow on the attached satellite picture) will be limited to scrutineering staff and no more than 2 service crew per vehicle.

Entry into area marked in RED is for Cars and will be limited to 2 vehicles and their crews at a time. Entry will be from Robey St (South and East of the outlined areas in the picture). Exit will be onto Chesterfield Hwy (Rt 9).

Entry into area marked in YELLOW is for Bikes and Quads.

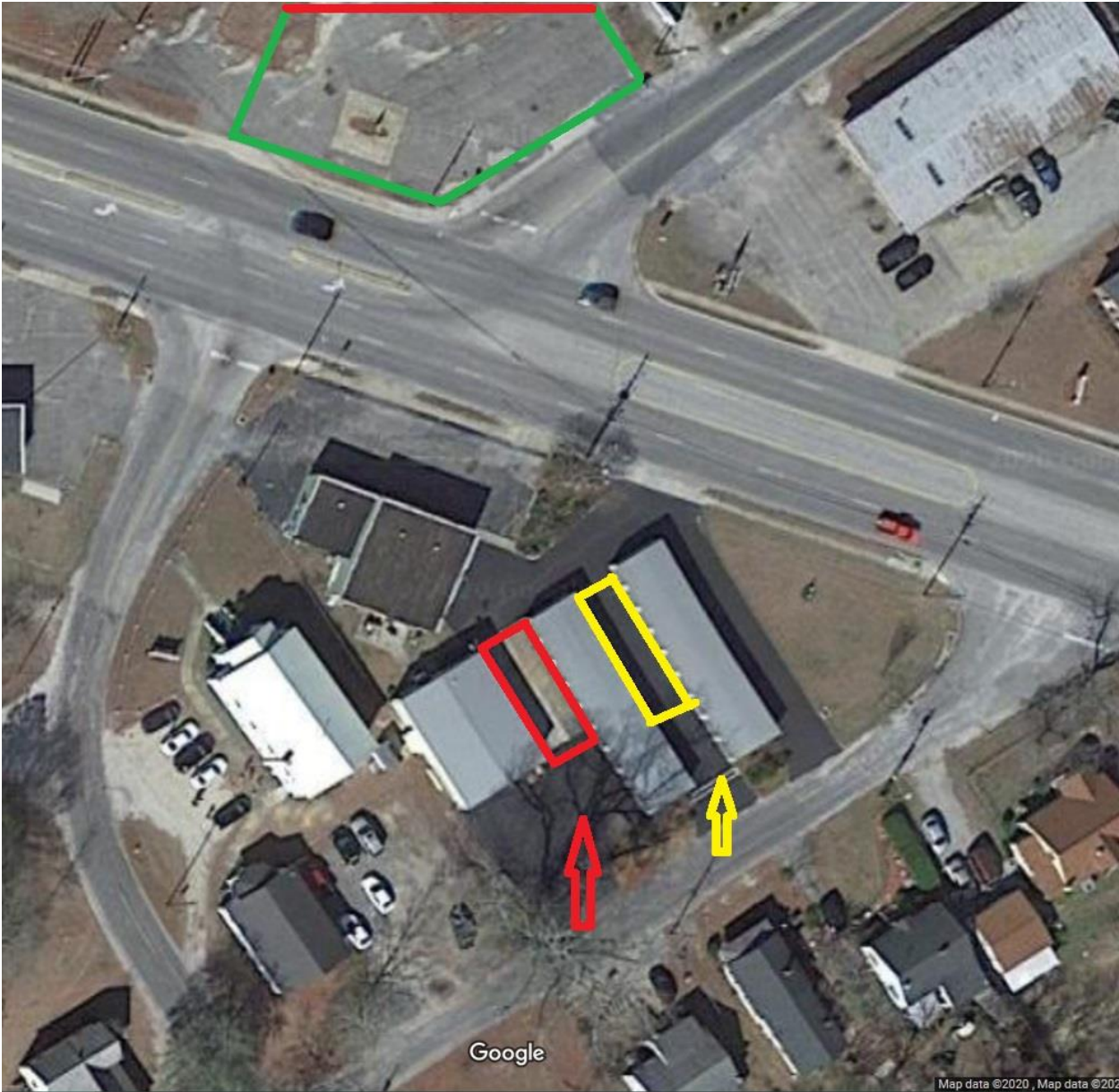
Once the vehicle has been inspected, it should be moved from the scrutineering area. If it did not pass (did not receive a tech sticker), it will be necessary to come back thru once deficiencies have been corrected.

Logbooks will be retained by Scrutineering at this event. The logbook event entry info for Sandblast 2024 should already be completed by the competitor prior to entering Scrutineering.

Preprinted vehicle specific techsheets will already be in the possession of Scrutineering, and will be completed by scrutineering when the vehicle is presented and will be retained by scrutineering.



Satellite Map



Andrew Frick
Clerk of Course